

# Foster Hydronic Heating

Since 1965

# ideal

HEATING

INDUSTRY LEADING  
**10 YEAR**  
**WARRANTY\***  
ON PARTS AND LABOUR

\*annual service required



## IDEAL LOGIC+



Award winning boilers  
made in the UK



Aluminium heat exchanger  
10 year warranty



Custom designed  
external cover



Lightweight components  
to reduce lift weight



Super quiet operation,  
UK Quietmark compliant



Premium components  
with compact design

## AUSTRALIA'S MOST ADVANCED HYDRONIC BOILER RANGE

### WHY CHOOSE IDEAL BOILERS?

Designed and developed for Australian conditions, Ideal boilers have been made in Britain since 1906. The Logic+ is the highest selling boiler model in the UK. High efficiency, fewer emissions and ultra-quiet operation make the Ideal Logic+ the most advanced hydronic boiler ever introduced into the Australian Market.

Backed by the industry leading **10 year warranty (Parts + Labour)**, the Ideal Logic+ is the obvious choice for the conscientious home owner.

#### MELBOURNE SHOWROOM

922-926 Glen Huntly Road, Caulfield South VIC 3162

03 9569 9559

WWW.HYDRONIC.COM.AU

Foster Hydronic Heating  
Since 1965

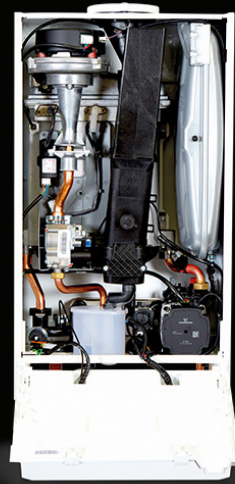
THOMASTOWN 03 9464 4622  
ALBURY/WODONGA 02 6024 7188

GEELONG 03 5223 3181  
CANBERRA 02 6280 8181

**ideal**  
HEATING

INDUSTRY LEADING  
**10 YEAR**  
**WARRANTY\***  
ON PARTS AND LABOUR

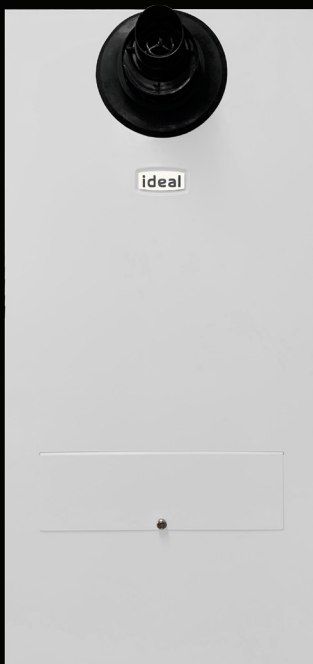
\*annual service required



# LOGIC+ RANGE

WELCOME TO OUR IDEOLOGY

General Data		18 System		30 System		35 Combi	
Gas Supply		Natural Gas at 1.13kPa		Natural Gas at 1.13kPa		Natural Gas at 1.13kPa	
Gas Supply Connection		3/4"		3/4"		3/4"	
Inlet Connection	Domestic Hot Water	N/A		N/A		1/2"	
Outlet Connection	Domestic Hot Water	N/A		N/A		1/2"	
Flow Connection	Central Heating	3/4"		3/4"		3/4"	
Return Connection	Central Heating	3/4"		3/4"		3/4"	
Flue Terminal Diameter	mm	100		100		100	
Packaged Weight (External)	kg	46.8		46.8		50.0	
Performance Data - Central Heating		Min	Max	Min	Max	Min	Max
Boiler output (non-condensing) Mean 70°C	kW	4.8	18.0	6.1	30.3	7.1	24.2
Boiler output (condensing) Mean 40°C	kW	5.1	19.1	6.4	31.0	7.5	25.6
Gas Consumption	MJ/h	18.5	71.43	23.01	119.41	27.16	142.2
Performance Data - Domestic Hot Water							
Maximum DHW Output	kW	N/A		N/A		35.3	
DHW Flow Rate at 25° temp. rise	l/min	N/A		N/A		20.2	



## EXTERNAL MODEL DIMENSIONS

